

DRAGON Magazine Archive – Manual

Credits

Wizards of the Coast

Director	Rob Voce
Producers	Anthony Valterra, Elizabeth Katz

Packaging

Package Art	Fred Fields
Senior Art Director	Jon Schindehette
Designer	Tanya Matson
Editing	Dale Donovan
Typography	Eric Haddock

Helikon Technologies Inc.

Programmers	Skye Poier, Pete Gardner, Conan Reis, Shawn Rogers
Lead Artist	Danica Bennett
Online Manual	Glen Callender
Project Manager	Pete Gardner

Content Conversion

PDF Conversion	BE Inc. (www.b-e.com)
----------------	-----------------------

Content Provided by DRAGON Magazine

U.S., CANADA, ASIA
PACIFIC, & LATIN AMERICA
Wizards of the Coast, Inc.
P.O. Box 707
Renton, WA 98057-0707
1-800-324-6496



EUROPEAN HEADQUARTERS
Wizards of the Coast, Belgium
P.B. 2031
2600 Berchem
Belgium
+32-70-233277

Visit our website at www.tsr.com

ADVANCED DUNGEONS & DRAGONS, AD&D, DRAGON Magazine, and the TSR logo are registered trademarks owned by TSR, Inc. All TSR characters and the distinctive likenesses thereof are trademarks owned by TSR, Inc. The characters and events described in this book are fictional. Any resemblance between the characters and any person, living or dead, is purely coincidental. ©1999 TSR, Inc. All rights reserved. Made in the U.S.A.

TSR, Inc. is a subsidiary of Wizards of the Coast, Inc.
Distributed to the book trade in the United States by Random House, Inc. and in Canada by Random House of Canada, Ltd.
Distributed to the hobby, toy, and comics trade in the United States and Canada by regional distributors.
Distributed worldwide by Wizards of the Coast, Inc. and regional distributors.

This material is protected under the copyright laws of the United States of America. Any reproduction or unauthorized use of the material or artwork contained herein is prohibited without the express written consent of TSR, Inc.

Table of Contents

1.0	Introduction	p	1
2.0	Hardware requirements	p	2
3.0	Running the program	p	3
4.0	Quitting the program	p	3
5.0	Accessing the Electronic Manual	p	3
6.0	Navigating the Archive	p	3
6.1	Main interface	p	3
6.2	Arrows (page turning)	p	4
6.3	Go To	p	5
6.4	Browse	p	6
6.5	Bookmarks	p	7
7.0	Search	p	9
7.1	Basic search	p	9
7.2	Advanced search	p	11
7.3	Search results	p	14
7.4	Speeding up your searches	p	15
8.0	Page Tools (using the mouse)	p	17
9.0	View	p	19
10.0	Options	p	20
11.0	Speeding up performance	p	22
12.0	Product credits	p	22
13.0	Hot keys - Quick reference	p	23

1.0 Introduction

Welcome to the DRAGON[®] Magazine Archive, a compendium of the first 250 issues of DRAGON Magazine. On this set of CDs is every article, every story, every dungeon, every statistic and every illustration that appeared in issues 1 to 250 of DRAGON Magazine, plus all seven issues of *The Strategic Review* (the forerunner to DRAGON Magazine). You can flip through the Archive page by page, use the Search features to scour the Archive for specific words or articles, and even bookmark articles you want to refer back to on a regular basis. Not only is the DRAGON Magazine Archive a great gaming resource, but reading through the early issues can be both nostalgic and entertaining! So sit back, and enjoy the ultimate dragon horde!

This electronic manual is more up-to-date than the print manual you received with this product. You can print it out by pressing [Alt + P].

2.0 Hardware requirements

Minimum platform required to successfully install/run this program:

Windows 95/98 or Windows NT 4.0
16 MB RAM
Pentium 75 MHz
1 MB VGA
800x600 screen resolution in 16 bit color
mouse
CD-ROM drive
hard drive with at least 20MB free
DirectX 6.1 or later (Windows 95)
Service Pack 4.0 or greater (Windows NT 4.0)

Recommended/optional equipment:

64 MB RAM
Pentium 133 MHz
4 MB VGA
12x CD-ROM
hard drive with at least 90 MB free
Windows compatible sound card

3.0 Running the program

When the DRAGON Magazine Archive is installed, you can run it from your Windows desktop. Just open the folder titled Dragon Magazine Archive under 'Programs' in your Start menu, and select Dragon Magazine Archive.

4.0 Quitting the program

You can quit the program any time by pressing [Ctrl + Q] or [Alt + F4], or clicking the X symbol in the top right hand corner of the window. This will shut down the program and return you to your Windows desktop.

5.0 Accessing the Electronic Manual

You can access this Electronic Manual any time by pressing F1. Alternatively, you can access the manual using the Browse feature (section 6.4). The Electronic Manual is listed in the Browse view after issue #250 of DRAGON Magazine.

6.0 Navigating the Archive

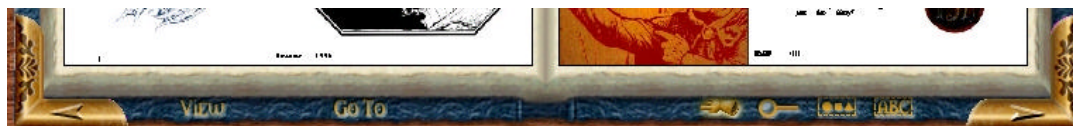
To get the most out of your DRAGON Magazine Archive, you should familiarize yourself with the tools available to help you efficiently navigate its thousands of pages.

6.1 Main Interface

When the program has finished loading, a blue and gold tome will appear in a resizable window. This tome is both the viewer and main interface of the DRAGON Magazine Archive. Around the edges of the tome you will find several icons or words. Each icon or word represents a function or sub-menu that will facilitate your use of the DRAGON Magazine Archive. Each of these features is described below.

6.2 Arrows (page turning)

On the bottom left and right corners of the tome are two arrows inlaid in the golden trim. These arrows enable you to move between adjacent pages and issues in the Archive. The left arrow represents the Previous Page function, the right arrow represents the Next Page function.



Previous Page [Page Up]

Moves to the previous page in the issue you are currently viewing. If you use the Previous Page command while viewing the first page of an issue, you will move to the last page of the previous issue (i.e. if you are viewing page 1 of issue #192 and you use the Previous Page command, you will move to page 122 of issue #191). If you use the Previous Page command while viewing the first page of the first issue in the Archive, you will move to the last page of the last issue in the Archive. If you wish to move to a page that is not near the page you are currently viewing, it is best to use the Go To function (6.3).

Next Page [Page Down]

Moves to the next page in the issue you are currently viewing. If you use the Next Page command while viewing the last page of an issue, you will move to the first page of the following issue (i.e. if you are viewing page 122 of issue #191 and you use the Next Page command, you will move to page 1 of issue #192). If you use the Next Page command while viewing the last page of the last issue in the Archive, you will move to the first page of the first issue in the Archive. If you wish to move to a page that is not near the page you are currently viewing, it is best to use the Go To function (6.3).

6.3 Go To [Ctrl + G]



This popup menu enables you to jump to any page in the issue you are currently viewing. There are five choices in the Go To popup menu:

First Page - jumps to the first page of the issue you are currently viewing

Last Page - jumps to the last page of the issue you are currently viewing

Previous Article - jumps to the first page of the preceding article

Next Article - jumps to the first page of the subsequent article

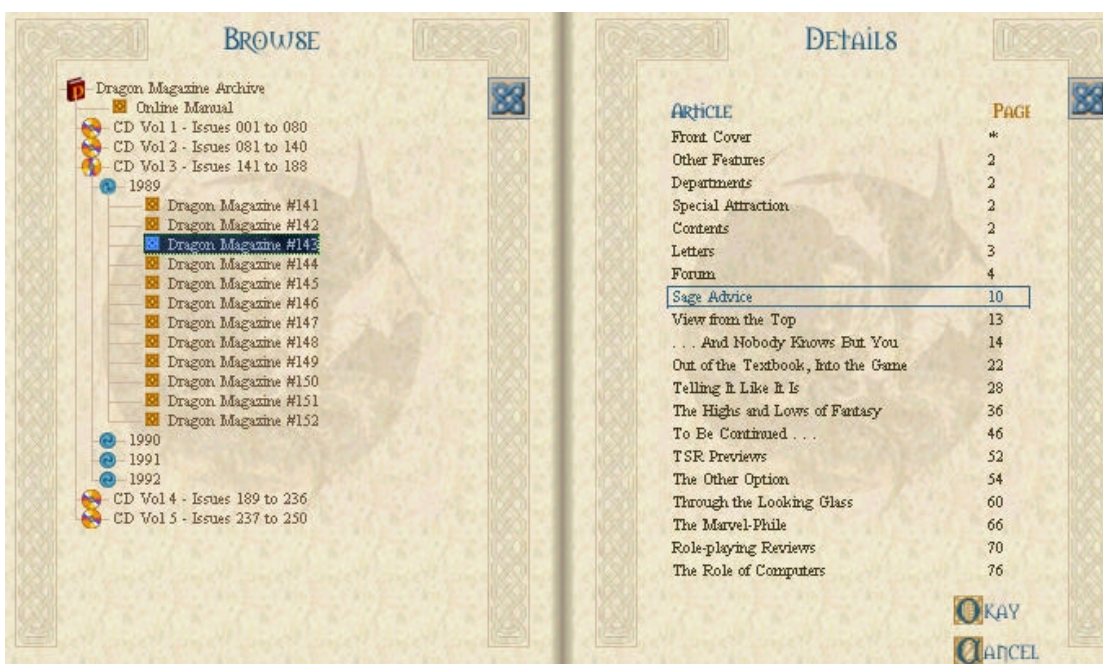
Page No. - jumps to any page you specify in the issue you are currently viewing. Type the number of the page you would like to view and press [Enter]

If you would like to view a different issue in the Archive, you must use the Browse function (6.4).

6.4 Browse [Ctrl + B]

The Browse function gives you an overview of the entire DRAGON Magazine Archive. You can browse through the Archive by CD, by year, or by issue, and click on selections for viewing.

The Browse screen is divided into two sections (seen below). The *Browse* view is a clickable hierarchy that allows you to easily jump between CDs, years and issues. The *Details* view will give you a closer look at items you select in the *Browse* hierarchy.



When you highlight a year in the *Browse* hierarchy, you can review the covers of every issue from that year. When you highlight a specific issue in the *Browse* hierarchy, you can review a list of the articles in that issue and their starting page numbers (when the list is long, the Celtic knot on the left side of the page acts as a scroll bar). Click the 'Article' and 'Page' captions to adjust the display of the article titles - click 'Article' to toggle the list between alphabetical and reverse alphabetical order, click 'Page' to toggle the list between forward and reverse starting page numbers.

To view an issue or article simply double-click it, or highlight it and click 'Okay.' To exit the Browse screen and return to the previous screen, click 'Cancel' or press the [Esc] key.

6.5 Bookmarks

You can quickly navigate to favorite articles in the Archive by creating a collection of bookmarks. Bookmarks are handy shortcuts back to material you would like to reread at some point in the future.

It is easy to set a bookmark. While viewing a page you would like to bookmark, click the long red ribbon reading 'Mark Page' [Ctrl + M]. Another red ribbon will appear; enter a name for your bookmark on the Title line and press [Enter]. Voila! Your bookmark is saved!



You can review your bookmarks by using the Bookmarks function [Ctrl + K]. On the Bookmarks screen you can arrange and edit your bookmarks by placing them in different groups, add new groups, import bookmarks that others have sent to you, and export bookmarks you wish to share with other DRAGON Magazine Archive owners.



Bookmarks cont'd

New Group

Clicking this button allows you to create a new group into which you can place bookmarks. To place a bookmark in a group, click on the bookmark and drag it to the desired group.

Edit

This feature allows you to edit the name of an existing bookmark. Just select the bookmark you wish to edit and click the 'Edit' button. You can rename a bookmark at any time.

Delete

If you wish to delete a bookmark or group of bookmarks, simply highlight and click 'Delete.'

Import

This feature allows you to import bookmarks that others have exported from their DRAGON Magazine Archives. Imported bookmarks will be initially placed in the 'Import' group.

Export

This feature allows you to export the highlighted bookmark or group as a DRAGON Bookmark (.dbk) file. Once created, you can save a .dbk to disk or email it to a friend using other Windows applications.

To exit the Bookmarks screen, click 'Cancel' or press the [Esc] key.

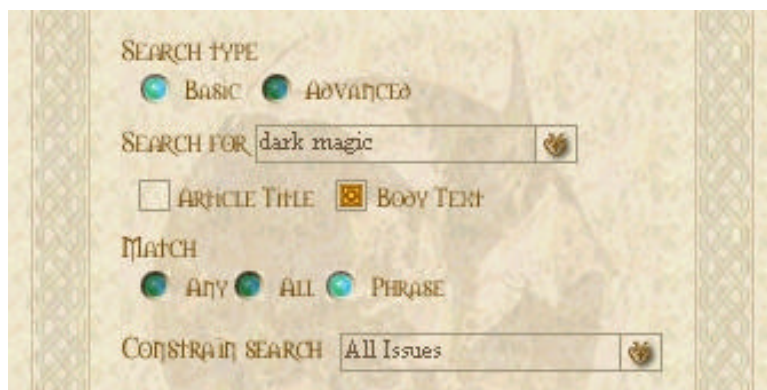
7.0 Search [Ctrl + S]

Use the Search function to scour the DRAGON Magazine Archive for specific words or phrases.

The Search function operates at two levels: Basic and Advanced. Choose the level that is best suited to the complexity of the information you are seeking.

7.1 Basic search

Basic searches are most useful if what you are looking for is very straightforward, i.e. occurrences of the word *quagmire* or the phrase "*I do not steal if my belly is full*"



Under 'Search type' select 'Basic.' Type a word, phrase or combination of words and phrases into the 'Search for' space. If your search items are a blend of words and phrases, phrases must be enclosed in quotation marks. A sample query might be:

wizard warrior "violent elf"

There are 3 items in the above query: *wizard*, *warrior* and "*violent elf*". In a Basic search, each item must be separated from the others with a space.

After you have entered your query, check the kind(s) of text in the Archive you wish to search. You can select article titles, body text, or both. Article title searches are much faster than body text searches.

Basic Search cont'd

Next, select the type of match you are looking for. You can search for pages which contain *any* of the items you specified, you can search for pages which contain *all* of the items, or you search for pages which contain your items as a single grouped *phrase*.

If you enter a blend of words and phrases and then select a *phrase* match, your query will be considered to be one large phrase. For example,

wizard warrior "violent elf" becomes *"wizard warrior violent elf"*

A few points about how text is processed for searching:

* Searches are not case-sensitive; in other words, both capitalized and lower-case letters are treated the same. Therefore, a search for *dungeon* will match *dungeon* and *Dungeon*.

* Apostrophes between letters act as word terminators, so all letters appearing after an apostrophe in a word are ignored. Therefore,

a search for *Fred's* will match *Fred* and *Fred's*.

* All other punctuation (commas, question marks, brackets, etc.) will be replaced with a space, with the exception of minus signs (-) that appear before digits (i.e. negative numbers), which will be retained, and periods that appear prior to digits (i.e. decimal points) which will not be replaced but will be ignored. Therefore,

a search for *14* will match *14*, but not *-14*;

a search for *2.02* will match *2.02* and *202*;

a search for *mish-mash* would be interpreted as two words, and would match *mish-mash* and *mish mash* but not *mishmash*.

Note that hyphenated words such as *mish-mash* will be interpreted differently based on which match type you select. The above example assumes you selected a *phrase* match. Since *mish-mash* is interpreted as two words, if you enter *mish-mash* and select an *all* match, your search will match pages containing *mish* and *mash*, and if you select an *any* match, your search will match pages containing *mish* or *mash*.

Basic Search cont'd

When you have set your search parameters, click 'Search' or press the [Enter] key. It is not necessary to have a CD of the issues to be searched in the CD-ROM drive.

Be patient, a search of the entire archive may take a few moments. During the search, you will be updated as to the number of matches found and the number of issues that remain to be searched. If the search will be particularly long you can leave the Search screen by clicking 'Cancel' or pressing the [Esc] key, and use the other features of the Archive. The Search will continue in the background and will signal you with a sound effect when it is completed. You can then return to the Search screen and review the results.

You can interrupt a search at any time by clicking 'Stop.' You will see a listing of all matches found before you interrupted the search.

7.2 Advanced search

By selecting the Advanced option, you can use a more powerful search language. You can now enter more detailed information in the 'Search for' space, such as the logical operators AND, OR, NOT and NEAR, which allow you to find text only when certain conditions occur. If you use the operator NEAR (which allows you to search for items in the Archive which are within a certain distance in words from each other), set the maximum distance between items in the 'Near word count' space.



Advanced Search cont'd

If you enter more than one item (word or phrase) in an Advanced search query, they must be linked with the above operators. The syntax of your query is important! In Advanced mode, any information that does not make sense to the search engine will be truncated from your query.

Therefore, if you enter

Elves or dwarves beasts

The Search engine would read this as *Elves or dwarves*

The Search engine would ignore *beasts*, because it is not linked to the rest of your query with AND, OR, NEAR or NOT.

To teach you more about the use and misuse of the operators, here are some examples of Advanced Search queries and their expected results:

"critical hit" – matches pages that contain the phrase *"critical hit"*

critical and hit – matches if the words *critical* and *hit* appear on the same page

critical hit – this is erroneous input in Advanced mode, because there must either be quotation marks around it (*"critical hit"*) or an operator (AND, OR, NOT, NEAR) separating the words (i.e. *critical or hit*). Since the computer truncates any erroneous items from your query, the computer will ignore *hit* and search only for *critical*

critical and hit and sword – matches if the words *critical* and *hit* and *sword* are on the same page (you can have as many items in your query as you like, so long as they are linked by the appropriate operators)

not hit – matches any page that does not contain the word *hit*

critical and not hit – matches if *critical* is on a page, and *hit* is not on the same page (note that when the NOT operator appears between two items, it must be preceded by AND or OR, and followed by the item you wish to not exist)

critical near hit – matches when *hit* is within a certain number of words from *critical* (as specified in the 'Near word count' space)

Advanced Search cont'd

critical near hit and orc – this is also erroneous input, because NEAR will only function when a single word or phrase follows it. The computer will ignore *near hit and orc* and search only for *critical orc and critical near hit* – matches if *orc* and *critical* are on the same page, and the word *hit* is near the word *critical* (*hit* need not be on the same page as *critical*)

flibble – returns immediately with "No Results" since *flibble* does not appear anywhere in the archive

"the flibble sword" – returns immediately with "No Results"

sword and flibble – returns immediately with "No Results"

sword or flibble – will only match occurrences of the word *sword*

"critical hit" and dagger or not sword near mail – try to figure this one out for yourself!

mirth or dragonmirth – use this query with an article title search to generate a full listing of the DRAGON Magazine humour section (in earlier issues it was called *Dragon Mirth* and in later issues it became *Dragonmirth*, so you must use the above query if you wish to match both titles)

When body text is selected, the Archive is searched with page-based logic; in other words, each page of an article is considered as a separate item for searching. Therefore, if your search query is *wizard and knave*, the Archive will search for occurrences of *wizard* and *knave* on the same page. If an article contains the words *wizard* and *knave*, but they are not on the same page, there will not be a match. If you would like to do a proximity search that spans across pages, use the NEAR operator. Also note that even if you are searching body text, text prior to the first article of an issue (i.e. the Table of Contents) is not searched.

The number of page hits for any logical query (a query using the AND, OR, NOT or NEAR operators) will always be just 1. This is because your queried items are either on the page or they are not. The only exception to this rule is when there is more than one article on the same page. Only single words or phrases can have more than one hit per page.

7.3 Search results

When your search is completed, the right-hand side of the Search screen displays a detailed list of any successful matches your search produced. Each result represents a page which contains a match; 'Page hits' refers to the number of times your query was matched on that page (1 if you used a logical search), and 'Article hits' refers to the overall number of matches that occurred in the article to which that page belongs. The name of the article is listed, as are the issue and page numbers (when you do a search using the NEAR operator, the page listed is the page on which the item to the left of NEAR appears). You can change the sorting of the results by clicking the column headers (Article hits, Page hits, Article title or Issue/Page number). Clicking the currently selected header a second time will sort the results in reverse order.

For example, the query *critical hit*, searching body text using a Basic search in *phrase* matching mode, and limiting the search to *all issues* would give the following results:

The screenshot shows a search interface with two panels: SEARCH and RESULTS.

SEARCH Panel:

- SEARCH TYPE: BASIC ADVANCED
- SEARCH FOR:
- ARTICLE TITLE BODY TEXT
- MATCH: ANY ALL PHRASE
- CONSTRAIN SEARCH:
- Found matches on 59 pages.
- Buttons: SEARCH, STOP

RESULTS Panel:

ARTICLE Hits	PAGE Hits	ARTICLE	ISSUE: PAGE
30	14	The Game Wizards	216:51
30	10	The Game Wizards	216:52
30	6	The Game Wizards	216:53
11	6	Good hits and bad misses	39:34
11	5	Good hits and bad misses	39:35
8	7	The Wild, Wild Wilderness	187:12
8	1	The Wild, Wild Wilderness	187:11
7	7	Forum	208:84
5	5	Same dice, different odds	94:19
5	5	Players Handbook II	120:13
5	5	Letters	218:4
5	2	Weapons of Mass Destruct	192:25
5	1	Weapons of Mass Destruct	192:24
5	1	Weapons of Mass Destruct	192:26
5	1	Weapons of Mass Destruct	192:28
4	4	ICE can stand the heat	88:66
4	3	Monster mixing: AD&D c	49:35
4	1	Monster mixing: AD&D c	49:38
3	3	Dragon's Augury: Judges	144:80
3	3	World Gamers Guide	98:38

Buttons: OKAY, CANCEL

To resolve the ambiguity between issues of *The Strategic Review* and DRAGON Magazine, *The Strategic Review* has the letter 'T' prefixed to its issue numbers. Also note that the first and second pages of most issues in the Archive (i.e. the front cover and the back of the front cover) are numbered 'i' and 'ii' respectively.

Search Results cont'd

If you have searched for a common word, i.e. "sword," your search results list could potentially contain hundreds of references. You can limit the maximum number of items in a search results list under 'Maximum search results' on the Options screen (section 10.0). The maximum possible number of items in a search results list is 300.

To view a page from your search results list, double-click it, or single-click it and click 'Okay.'

To exit the Search screen, click 'Cancel' or press the [Esc] key. The results from your most recent search will remain until another search is performed or you quit the program.

7.4 Speeding up your searches

Depending on the processing speed, hard drive speed and available memory on your computer, a search can take anywhere from a few seconds to a few minutes. There are a few methods you can employ to speed up your longer searches:



The best way to speed up your search is to constrain your search to specific areas of the Archive, so that you don't have to search through an unnecessarily large amount of information. For example, if you know that the article you are looking for was published in 1992, you can speed

Speeding up your searches cont'd

things up by searching only the twelve issues from that year. The 'Constrain search' menu offers many search options; scroll through them and select the one which is most suitable. Note that you must have an issue loaded into the viewer if you wish to use the 'Current issue' selection.

Another method of speeding up a search is to limit the number of matches your search will generate. The fewer matches you require, the shorter the search will be. You can adjust the number of matches you require in the 'Maximum search results' space on the Options screen (section 10.0).

At any time, you can interrupt a search in progress by clicking 'Stop'. You will immediately see a list of all matches found before you interrupted the search.

The phrasing of your queries can also affect the speed of a search. To help speed up a search involving the logical operators (AND, OR, NOT, NEAR), consider how common the items in your query are likely to be. For example, a search for *bane and dragon* will be faster than a search for *dragon and bane* because there are likely to be less occurrences of *bane* in the Archive than *dragon*, and therefore it would take less time to search every page containing *bane* for *dragon* than it would take to search every page containing *dragon* for *bane*.

The fastest ordering of items could be different depending on which operators you use. For example, a search for *dragon or bane* will be faster than *bane or dragon* because *dragon* is likely to occur more frequently in the Archive than *bane*, and therefore it would take less time to look for *dragon* first and *bane* second – the computer will not bother looking for *bane* once a match for *dragon* is found on a page.

Speeding up your searches cont'd

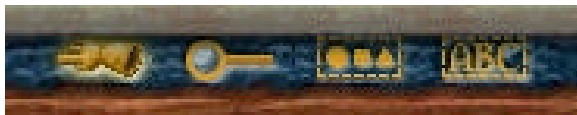
Searching uses memory-mapped file technology that takes advantage of a computer's caching. The more memory a computer has, the faster its searching will be. Even with a small amount of memory, repeatedly searching the same set of issues will be faster than searching different sets of issues, since the issues you wish to search will already be loaded into the cache.

Finally, your searching can be made faster and more convenient by using the 'Saved searches' feature. The DRAGON Magazine Archive keeps a record of your most recent search queries, so it can spare you the bother of re-typing recent queries. You can review your most recent search queries by pulling down the menu in the 'Search for' box. The number of searches remembered can be adjusted under 'Saved searches count' on the Options screen (section 10.0). The maximum possible number of remembered searches is 25.

For information about speeding up other aspects of the program, such as page retrieval, see *Speeding up performance* (11.0).

8.0 Page tools (using the mouse)

The icons listed on the bottom right edge of the tome represent tools for viewing and manipulating the pages of the Archive.



Hand [F5] [Arrow Keys]

Clicking this icon changes the mouse pointer into a hand which can "grab" the page you are currently viewing and move it about on the screen. This function is particularly useful when you are zoomed in on a page and can not see everything on the page at one time. Simply position the hand over the page and hold down the left mouse button. The page will follow the movement of the mouse until the left mouse button is released. The arrow keys on your keyboard can also be used to scroll the page horizontally and vertically. Holding down the [Alt] key while you press the arrow keys increases the speed of the scroll.

Page tools cont'd

Magnifying glass [F6] [numeric pad "+"] [numeric pad "-"]

Clicking this icon changes the mouse pointer into a magnifying glass which can change the level of zoom on the page. Simply position the magnifying glass over the page you are currently viewing and click the mouse. Left-clicking zooms in and right-clicking zooms out. Maximum zoom is 200 percent. You can also use the [numeric pad "+"] and [numeric pad "-"] keys to zoom in and out. Holding down the [Alt] key while you press [numeric pad "+"] or [numeric pad "-"] increases the increment of the zoom.

Box with shapes [F7]

Clicking this icon changes the mouse pointer into a cross-hairs which allow you to copy images out of the DRAGON Magazine Archive for use in other applications. Simply hold down the left mouse button and draw a box around the image you wish to copy. When you release the left mouse button, a bitmap of the image area inside the box will be automatically copied into your Windows clipboard. Keep in mind that your Windows clipboard can only hold one selection at a time.

Box with text [F8]

Clicking this icon changes the mouse pointer into a text selection tool which allows you to highlight text and copy it to your Windows clipboard for use in other applications. Simply highlight the text you wish to copy by holding down the left mouse button. When you release the left mouse button, the highlighted text will be automatically copied into your Windows clipboard. Keep in mind that your Windows clipboard can only hold one selection at a time.

9.0 View [Ctrl + V]



This popup menu allows you to change the parameters of your view as you read pages in the DRAGON Magazine Archive. You can also print the pages you are currently viewing.

Single Page [Ctrl + 1]

Displays pages one at a time.

Facing Pages [Ctrl + 2]

Displays pages two at a time, facing each other as they would in a print magazine.

Fit Width [Ctrl + W]

Resizes the displayed pages to fit the width of the viewing area.

Fit Height [Ctrl + H]

Resizes the displayed pages to fit the height of the viewing area.

Width [Ctrl + R]

Resizes the page width to the percentage entered into the field. Maximum width is 200%.

Print [Ctrl + P]

Launches the Printer dialog box. You can print pages from the Archive in two formats: text with images and text without images. Toggle this setting under 'Print Images' on the Options screen (section 10.0).

To return to the main menu, click 'View' again or press the [Esc] key.

10.0 Options [Ctrl + O]

The Options page allows you to set numerous options which will influence the operation of the DRAGON Magazine Archive.



Resume place from last session

When this box is checked, the next time you start the DRAGON Magazine Archive it will load the last issue you were viewing, at the page where you left off.

Sounds on

Toggles the sounds on and off.

Font smoothing

Click this box to toggle font smoothing on and off. Smoothed fonts look better but take slightly longer to display.

Options cont'd

Print images

When this box is checked, the Print function [Ctrl + P] will print a full reproduction of the selected page, including illustrations and graphical content. When this box is not checked, the Print function will print only the text from the selected page.

Saved searches count

Limits the number of searches that the Search function will remember (see section 7.4). This value can not exceed 25.

Maximum search results

Limits the maximum size of a search results list (see section 7.3). This value can not exceed 300.

Register button

When you click this button your computer's default web browser will execute and take you to the Wizards of the Coast product registration site. There you will be able to register your purchased product and benefit from the additional support enjoyed by registered users.

Upgrade check button

When you click this button the DRAGON Magazine Archive will automatically check in with the DRAGON Magazine Archive web site. This will allow the inclusion of future DRAGON Magazine Archive releases and upgrades as developed.

When you are satisfied with the changes you have made to the Options screen, click 'Okay' to save the changes and exit the Options screen.

To exit the Options screen, or discard any changes you have made to the Options screen, click 'Cancel' or press the [Esc] key.

11.0 Speeding up performance

If you would like the DRAGON Magazine Archive to retrieve pages faster, you may copy the issues you most frequently use to your hard drive (data retrieval is much faster from a hard drive than from a CD-ROM drive). When you wish to access pages saved to your hard drive, remove the CD from your CD-ROM drive. When the program searches for your saved issues, it will present you with a browse dialog. Select the folder in which you saved the issues, and the program will retrieve them.

If you have a large amount of extra hard drive space available (approx. 2.5 gigabytes), you can speed up the program even more by copying the entire DRAGON Magazine Archive onto your hard drive. This will make CDs unnecessary to run the program.

12.0 Product credits [Ctrl + D]

Click the wax seal emblazoned with the DRAGON logo to get further information about the producers of the DRAGON Magazine Archive.

13.0 Hot keys (Quick reference)

Previous [Page Up]
Next [Page Down]
Go To [Ctrl + G]
 First Page [Home]
 Last Page [End]
 Previous Article [Ctrl + Left Arrow Key]
 Next Article [Ctrl + Right Arrow Key]
Browse [Ctrl + B]
Mark Page [Ctrl + M]
Bookmarks [Ctrl + K]
Search [Ctrl + S]
Page tools (mouse pointers)
 Hand [F5]
 Magnifying Glass [F6]
 Box with shapes [F7]
 Box with text [F8]
Scroll page left [Left Arrow Key]
Scroll page right [Right Arrow Key]
Accelerated scroll page left [Alt + Left Arrow Key]
Accelerated scroll page right [Alt + Right Arrow Key]
Zoom in [numeric pad "+"]
Zoom out [numeric pad "-"]
Accelerated Zoom in [Alt + numeric pad "+"]
Accelerated Zoom out [Alt + numeric pad "-"]
View [Ctrl + V]
 Single Page [Ctrl + 1]
 Facing Pages [Ctrl + 2]
 Fit Width [Ctrl + W]
 Fit Height [Ctrl + H]
 Width [Ctrl + R]
 Print [Ctrl + P]
Options [Ctrl + O]
DRAGON Magazine Archive credits [Ctrl + D]
Cancel / Return to main interface [Esc]
Access Electronic Manual [F1]
Quit [Ctrl + Q] [Alt + F4]